

constructed landscapes :
Australia-China connections

Artists 艺术家

Hu Qinwu 胡勤武
Jayne Dyer 简 戴尔
Tony Scott/Huang Xu 托尼-苏格特 / 黄旭
Anne Graham/Allan Chawner 安妮格雷厄姆 / 阿伦乔纳

Acknowledgements 致谢

CAP Director - Tony Scott 中国艺术项目的负责人—托尼-苏格特
ME Photo Directors - Mary Kwok, Edward Chung 东磊影像画廊负责人—郭磊, 钟旭东
Curator - Reg Newitt 艺术总监—牛睿智
Designer - Shasha 设计—莎莎
Translator - Ouyang Fei 翻译—欧阳菲菲



constructed landscapes:
Australia - China connections

The physical and social landscape of China is re-forming at an unprecedented rate - a phenomenal growth of cities and concomitant wealth, unevenly distributed. Traditional communist and recent capitalist economic and political practices collide - to impact dramatically on the lives of people.

constructed landscapes' works present issues and situations with incongruent juxtapositions - they construct or suggest alternative readings of reality with surreal embodiments or poetic license. Physical, conceptual, psychological and social landscapes are interdependent.

The irony, wit and sardonic humour the artists infuse into the work, offer a deeper perspective of social realities.

Lifetime experiences, long-term and brief encounters with environments, determine responses to the immediate situation which, in turn, construct layers of perceptions and readings.

The different experiences and levels of engagement with the New China that each artist brings to the collective (exhibition), generate a global dialogue transgressing the immediate and challenging the known.

Reg Newitt
May 2010

当代社会的风景:
澳大利亚-中国 携手合作

中国的社会面貌正以一种前所未有的速度重新形成—城市间的迅速发展, 随之而来的财富增长和明显的分配不均。传统的共产主义和资本主义政治经济相碰撞对人们的生活有着戏剧性的影响。

当代社会的风景诠释了这个主题和当代的现状—作品建议我们用不同的目光审视现实。自然, 概念, 心理学, 和社会, 这些角度之间是相互依存的。艺术家们具有讽刺意味, 深刻, 又不乏幽默的作品让我们更遥远的看到这个社会现实的另一面。

毕生的经验, 长期的和短暂的与环境的接触, 决定了对当前形势的回应, 从而得出了不同层次的认知和答复。

不同的经历和参与水平以及来自中澳艺术家带来的作品(展览), 产生的了一个全球性的具有挑战意义的对话。

牛睿智
2010五月



Jayne Dyer
The old world's new world 5, 2010 photograph edition 5 20 x 30 cm



Anne Graham/Allan Chawner
Listen (Anika Erixan), 2010 (detail) mounted printed panel, 17.6 x 22.61 cm



Anne Graham/Allan Chawner
Composite Image of Listen, 2010

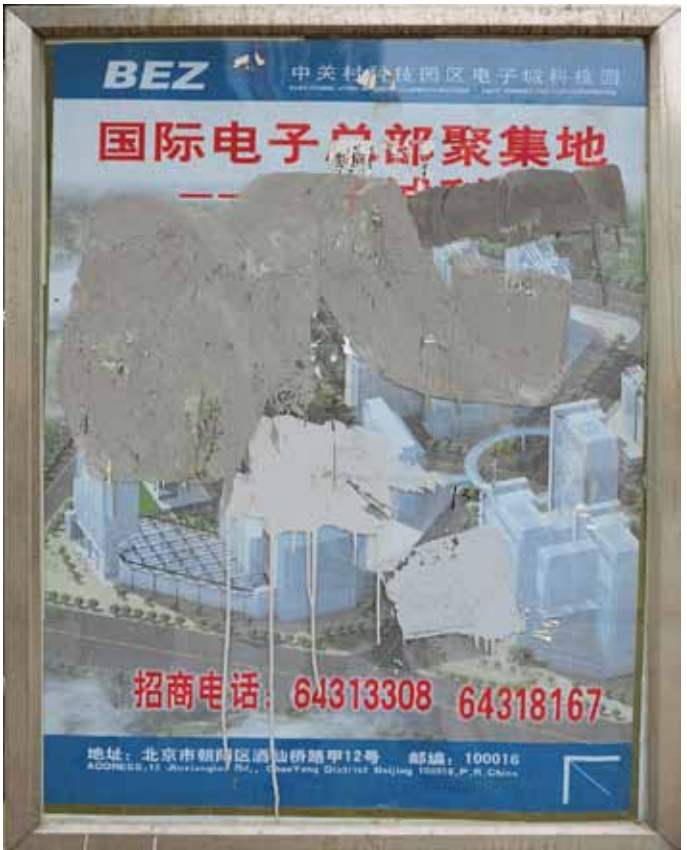




Hu Qinwu
Beijing: Beijing 2, 2009 digital print edition 5, 90 x 90 cm



Hu Qinwu
Beijing: Beijing 2, 2009 digital print edition 5, 90 x 90 cm



Tony Scott / Huang Xu
Beijing realestate 28, 2006 digital image edition 5, 100 x 80 cm



Tony Scott / Huang Xu
Beijing realestate 24, 2006 digital image edition 5, 100 x 80 cm



Jayne Dyer
The old world's new world 3, 2010 photograph edition 5, 30 x 20 cm



Allan Chawner
Beijing Ballet, 2010 video, DVD Pal standard definition duration 4 mins
21 seconds dimensions variable (Still image taken from video)